

# BACKER SPRINGFIELD



## Evapoway

Backer Springfield's Evapoway anti-condensate pans are used by leading companies in Commercial Refrigeration, HVAC, and Vertical Transportation (elevators). These durable and reliable products use the highest quality components (including NSF certified pans) to evaporate defrost and condensation where no drain line is available.

### BENEFITS

- Positive evaporation
- Independent of ambient conditions
- Space saving
- Wide variety of sizes to accommodate different capacities and voltages

### APPLICATIONS

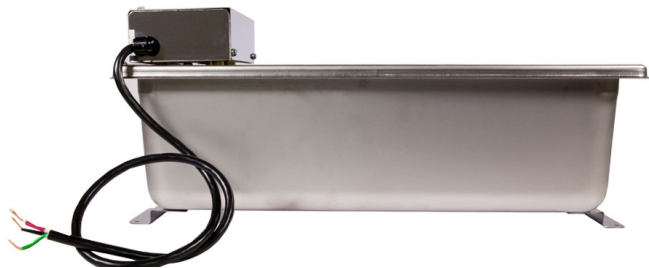
- Commercial refrigeration units
- Elevators
- HVAC units



Made of high quality stainless steel, our electric condensate evaporators can dissipate up to 24 gallons of condensation water per day. All units have successfully passed rigorous testing and are UL recognized in the USA and Canada. Evapoway units are manufactured in a variety of sizes and capacity to meet any application.



# EVAPOWAY



The Evapoway condensate evaporator is available in five series and 21 different models to meet your exact dimensions and capacity requirements. Our advanced engineering and design capabilities offer customization for any system.

## TECHNICAL SPECIFICATIONS

### CUSTOMIZATION

**Rated Voltage** 120 V , 208 V, 240 V

**Rated Power** 200 W - 3,000 W

**Cord Lengths** Many variations in length and terminations available

**Dissipation rate** 1.5 - 2.4 (gal/day)

MODEL NO.	PAN SIZE (L x W x H)	WATTS	VOLTS	AMPS	DISSIPATION RATE (GAL/DAY)	CAPACITY (QUARTS)
DM02T-1S	10 x 7 x 2.5 (5.3)	200	120	1.67	1.5	1.75
DM04T-1S	10 x 7 x 2.5 (5.3)	400	120	3.33	3.5	1.75
DM04T-2S	10 x 7 x 2.5 (5.3)	400	208	1.92	3.5	1.75
DM04T-3S	10 x 7 x 2.5 (5.3)	400	240	1.66	3.5	1.75
DM05WWS-1S	21 x 13 x 2.5 (5.3)	500	120	4.17	5	7
DM06S-1S	13 x 7 x 2.5 (5.3)	600	120	5.00	4.5	2.37
DM06M-1S	13 x 7 x 4 (6.8)	600	120	5	4.5	4
DM07M-1S	13 x 7 x 4 (6.8)	750	120	6.25	5.5	4
DM07M-2S	13 x 7 x 4 (6.8)	750	208	3.61	5.5	4
DM07W-1S	13 x 10 x 4 (6.8)	750	120	6.25	5.5	7
DM08S-1S	13 x 7 x 2.5 (5.3)	800	120	6.67	6	2.37
DM08S-2S	13 x 7 x 2.5 (5.3)	800	208	3.85	6	2.37
DM08S-3S	13 x 7 x 2.5 (5.3)	800	240	3.33	6	2.37
DM08WS-1S	13 x 10 x 2.5 (5.3)	800	120	6.67	6	4.3
DM08WS-2S	13 x 10 x 2.5 (5.3)	800	208	3.85	6	4.3
DM08WS-3S	13 x 10 x 2.5 (5.3)	800	240	3.33	6	4.3
DM08W-1S	13 x 10 x 4 (6.8)	800	120	6.67	6	7
DM09M-1S	13 x 7 x 4 (6.8)	900	120	7.50	7	4
DM10M-1S	13 x 7 x 4 (6.8)	1000	120	8.33	8	4
DM10M-2S	13 x 7 x 4 (6.8)	1000	208	4.81	8	4
DM10M-3S	13 x 7 x 4 (6.8)	1000	240	4.17	8	4
DM10W-1S	13 x 10 x 4 (6.8)	1000	120	8.33	8	7
DM10W-2S	13 x 10 x 4 (6.8)	1000	208	4.81	8	7
DM10W-3S	13 x 10 x 4 (6.8)	1000	240	4.17	8	7
DM15W-1S	13 x 10 x 4 (6.8)	1500	120	12.5	12	7
DM15W-2S	13 x 10 x 4 (6.8)	1500	208	7.21	12	7
DM15W-3S	13 x 10 x 4 (6.8)	1500	240	6.25	12	7
DM15X-3S	13 x 10 x 6 (8.8)	1500	240	6.25	12	10
DM15XY-2S	21 x 6 x 6 (8.8)	1500	208	7.21	12	9
DM15XY-3S	21 x 6 x 6 (8.8)	1500	240	6.25	12	9
DM15XX-3S	21 x 13 x 6 (8.8)	1500	240	6.25	12	21

MODEL NO.	PAN SIZE (L x W x H)	WATTS	VOLTS	AMPS	DISSIPATION RATE (GALLONS/D AY)	CAPACITY (QUARTS)
DM-05W-1D	13 x 10 x 4 (6.8)	500	120	4.17	5	7
DM05WW-1D	21 x 13 x 4 (6.8)	500	120	4.17	5	15
DM10W-1D	13 x 10 x 4 (6.8)	1000	120	8.33	8	7
DM10W-2D	13 x 10 x 4 (6.8)	1000	208	4.81	8	7
DM10W-3D	13 x 10 x 4 (6.8)	1000	240	4.17	8	7
DM10WW-1D	21 x 13 x 4 (6.8)	1000	120	8.33	8	15
DM10WW-2D	21 x 13 x 4 (6.8)	1000	208	4.81	8	15
DM10WW-3D	21 x 13 x 4 (6.8)	1000	240	4.17	8	15
DM12W-1D	13 x 10 x 4 (6.8)	1200	120	10.00	10	7
DM12WW-1D	21 x 13 x 4 (6.8)	1200	120	10.00	10	15
DM15W-1D	13 x 10 x 4 (6.8)	1500	120	12.5	12	7
DM15W-2D	13 x 10 x 4 (6.8)	1500	208	7.21	12	7
DM15W-3D	13 x 10 x 4 (6.8)	1500	240	6.25	12	7
DM15WW-1D	21 x 13 x 4 (6.8)	1500	120	12.5	12	15
DM15WW-2D	21 x 13 x 4 (6.8)	1500	208	7.21	12	15
DM15WW-3D	21 x 13 x 4 (6.8)	1500	240	6.25	12	15
DM18W-1D	13 x 10 x 4 (6.8)	1800	120	15.00	14	7
DM18WW-1D	21 x 13 x 4 (6.8)	1800	120	15.00	14	15
DM18X-1D	13 x 10 x 6 (8.8)	1800	120	15.00	14	21
DM18XX-1D	21 x 13 x 6 (8.8)	1800	120	15.00	14	21
DM20W-2D	13 x 10 x 4 (6.8)	2000	208	9.61	15	7
DM20W-3D	13 x 10 x 4 (6.8)	2000	240	8.33	15	7
DM20WW-2D	21 x 13 x 4 (6.8)	2000	208	9.62	15	15
DM20WW-3D	21 x 13 x 4 (6.8)	2000	240	8.33	15	15
DM30WW-1S	21 x 13 x 4 (6.8)	3000 (2X15 00)	120	12.5	24	15
DM30WW-3S	21 x 13 x 4 (6.8)	3000 (2X15 00)	240	6.25	24	15
DM30XX-2S	21 x 13 x 6 (8.8)	3000 (2X15 00)	208	7.21	24	21
DM30XX-3S	21 x 13 x 6 (8.8)	3000 (2X15 00)	240	6.25	24	21



**BACKER  
SPRINGFIELD**



UL File: SA4508

Backer Springfield, 4700 John Bragg Hwy, Murfreesboro, TN 37127. Phone: +1 615 907 6900, Fax: +1 615 907 6948, [www.backer-springfield.com](http://www.backer-springfield.com)

Issue Date: January 16, 2017